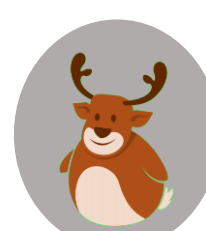


Solutions



$2 + 3 + 2 = 7$

$3 + 3 = 6$

$2 + 2 + 2 = 6$

$4 + 4 + 2 = 10$

$4 + 4 + 4 = 12$

$3 + 3 + 4 = 10$

$2 + 2 = 4$

$2 + 6 = 8$

Solutions



$1 + 6 + 3 = 10$
 $1 + 1 = 2$
 $1 + 6 = 7$

Icons: Reindeer, Elf, Santa, Santa



$3 + 3 + 2 = 8$
 $4 + 4 + 4 = 12$
 $2 + 4 + 2 = 8$

Icons: Santa, Elf, Santa



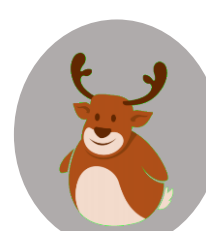
$2 + 2 + 2 = 6$
 $1 + 1 + 2 = 4$
 $2 + 1 + 2 = 5$

Icons: Elf, Elf, Santa



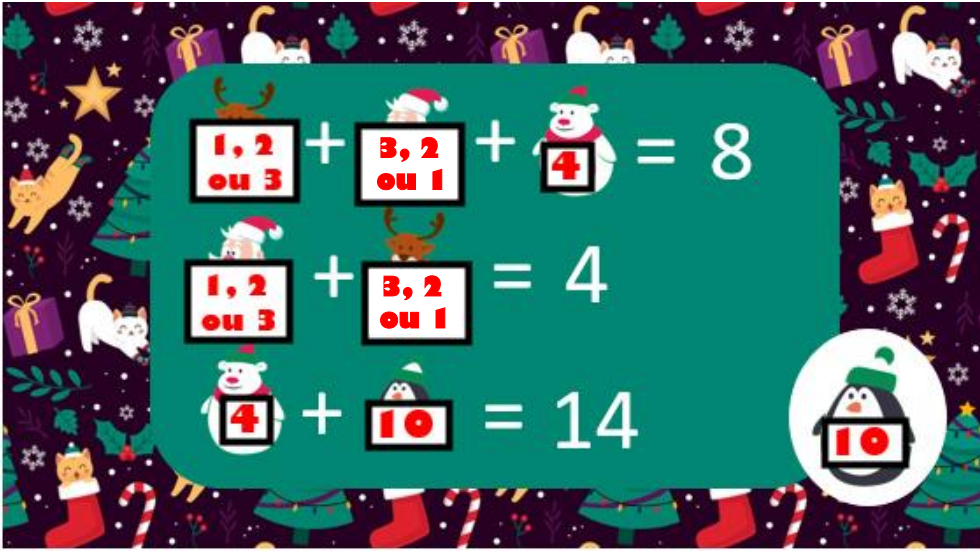
$3 + 4 + 3 = 10$
 $3 + 2 = 5$
 $4 + 4 = 8$

Icons: Santa, Reindeer, Reindeer



Solutions


$$\begin{aligned} 1 + 3 + 1 &= 5 \\ 3 + 3 &= 6 \\ 3 + 3 + 1 &= 7 \end{aligned}$$


$$\begin{aligned} 1, 2 + 3, 2 + 4 &= 8 \\ 1, 2 + 3, 2 &= 4 \\ 4 + 10 &= 14 \end{aligned}$$


$$\begin{aligned} 3 + 7 &= 10 \\ 7 + 4 &= 11 \\ 4 + 3 &= 7 \end{aligned}$$


$$\begin{aligned} 10 + 10 &= 20 \\ 10 + 10 &= 20 \\ 10 &= 10 \end{aligned}$$

